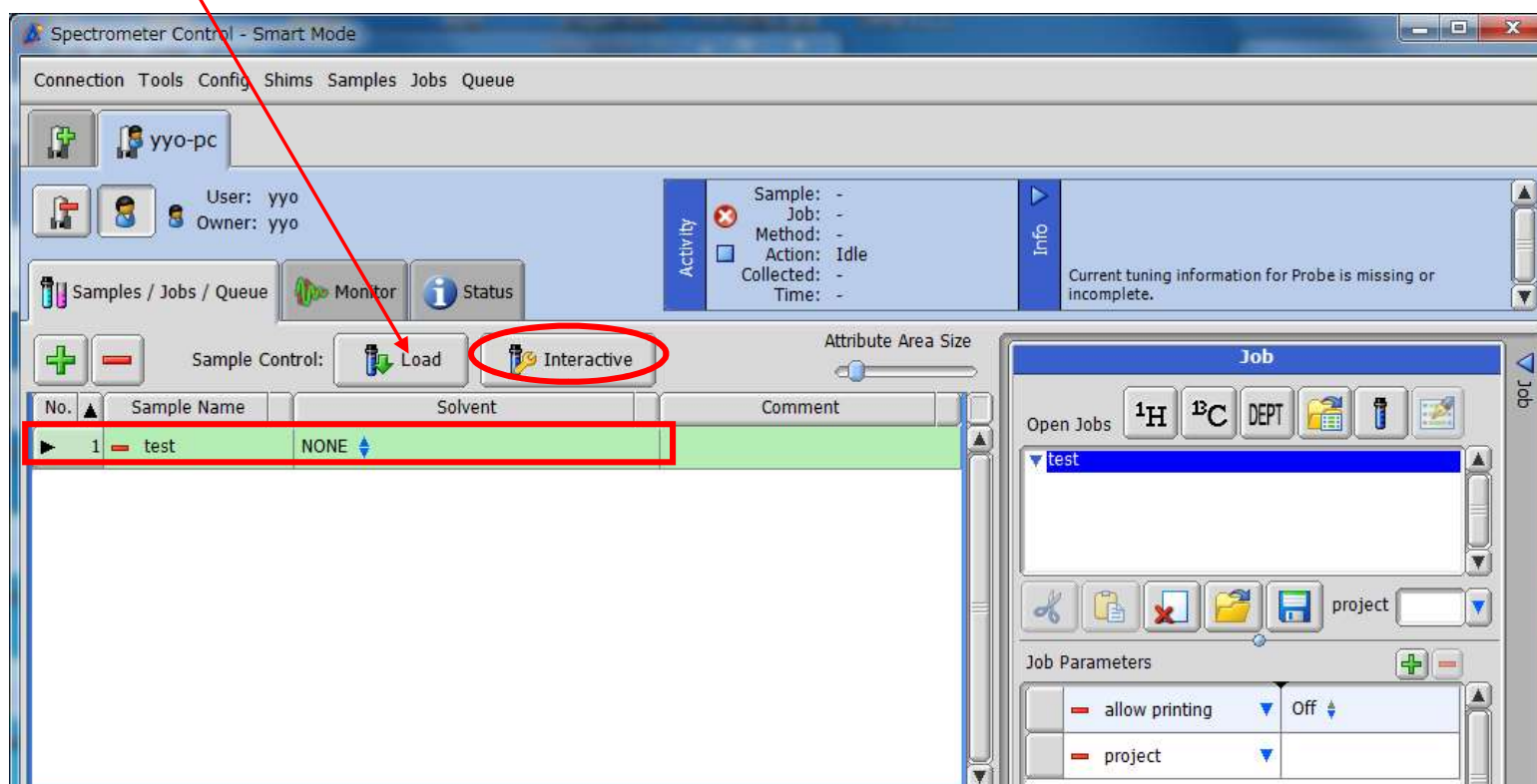


NoD实验测定



1. 样品设定

- 编辑样品名称→选择溶剂为**NONE**
 - 第一次做No-D实验，按下述步骤进行
 - 非第一次No-D实验，直接调至步骤3选择脉冲
- 先手动load进样→打开**Interactive**



2. 查看匀场参数是否设定

➤ 打开Spin

➤ 点击匀场工具



The screenshot displays the Bruker console software interface. At the top, there are tabs for 'Samples / Jobs / Queue', 'Monitor', and 'Status'. Below this, a status bar shows 'Lock & Shim', 'Sawtooth', and 'Probe' options. The main interface is divided into several panels:

- Sample State:** Includes a solvent input field set to 'NONE' and a lock meter showing a value of 864.
- Spinner:** Features a 'Spinner' icon, a 'Current' field set to 16[Hz], and a 'Target' field set to 15[Hz]. A 'SPIN ON 15[Hz]' indicator is visible.
- Temperature:** Shows a 'Current' field set to 24.9[dC] and a 'Target' field set to 25.0[dC]. A 'TEMP OFF 25[dC]' indicator is present.
- Lock Control:** Contains a 'Status' field set to 'LOCK OFF' and a 'LOCK ON' button. It also includes a checkbox for 'Automatic Gradient Shimming' and a button labeled 'Open the Gradient Shim tool' with a shim icon circled in red.
- Shim Groups:** A section for adjusting shim groups Z1, Z2, Z3, and Z4, each with a '0[Hz]' target and adjustment buttons.

At the bottom of the interface, a status bar displays various parameters: Receiver Gain: 50, Spin: 15[Hz], Lock: 903, Temp: 25[dC], Helium: 50[%], Nitrogen: 75[%], and No Jobs.

➤ 设置匀场参数

没法选择的
需要进行匀
场校准，步
骤见资料<
场图校准说
明>)

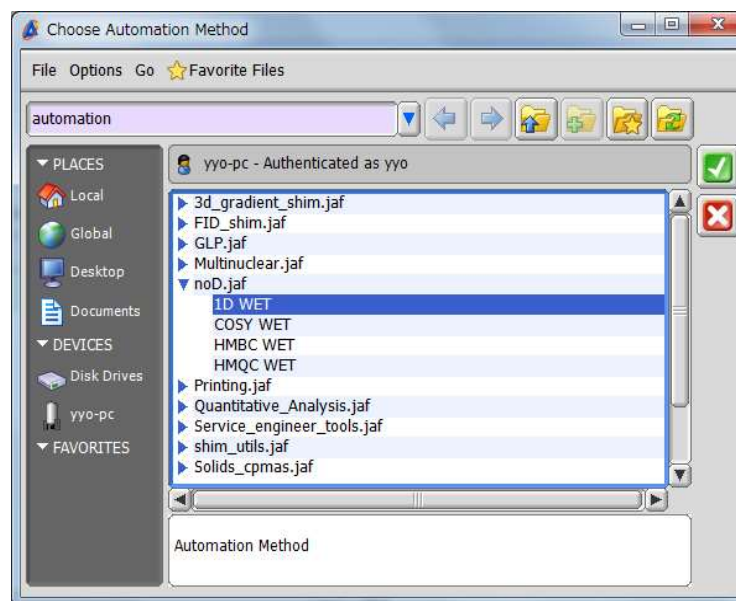
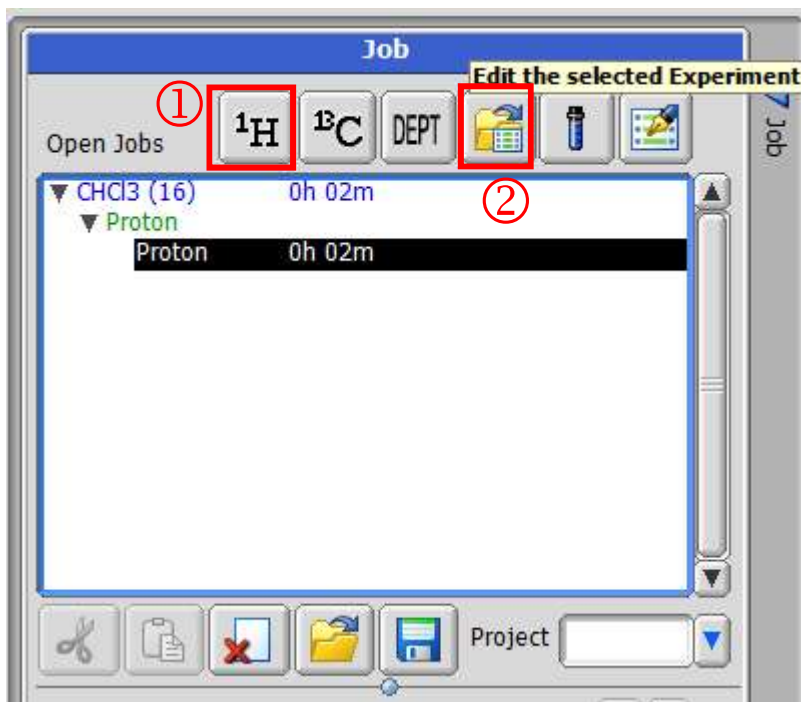
首次设定需要去
掉勾选，将匀场
参数设置为默认

(若非第一次实验，需要针
对单个样品手动提交梯度匀
场时，需勾选上)

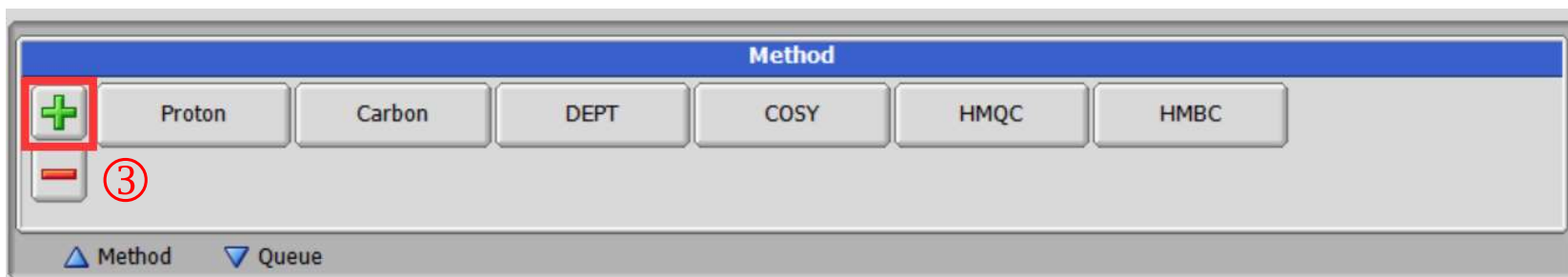
→ Z1-Z6均需勾选上

3. 选择脉冲

- 不需要压制溶剂实验选择普通脉冲即可（如氢谱选择 ^1H ，①）
- 需要压制溶剂实验选择**1D WET**脉冲（两种方法②③）



选择1D WET脉冲即可



4. 参数设定

- 选择溶剂及需要压制的溶剂峰组数→设置扫描次数，提交实验

The screenshot displays the 'Spectrometer Control - Smart Mode' interface. The main window shows a table with columns for 'No.', 'Sample Name', 'Solvent', and 'Comment'. A single row is visible with '1', 'test', and 'NONE'. The right-hand panel, titled 'Job', contains 'Open Jobs' and 'Method Parameters' sections. The 'Method Parameters' section is expanded to show the following settings:

Parameter	Value
wet_solvent	Chloroform
peaks	1
force_tune	<input type="checkbox"/>
autogain	<input checked="" type="checkbox"/>
rgain	<input type="checkbox"/>
scans	8

Below the parameters, there are fields for 'Scans' (set to 8), 'Policy' (Choose a scheduling policy), and 'Start' ([dd-mmm-yyyy] hh:mm:ss). A 'Submit' button is located at the bottom right of the job configuration panel. The bottom status bar shows system information: Receiver Gain: 50, Spin: 0[Hz], Lock: 431, Temp: 25[dC], Helium: 50[%], Nitrogen: 75[%], and Queue Length: 0.

A. 选择溶剂，里边没有的话选择相近的

B. 选择要除掉的峰的个数。比如氯仿1个，甲醇2个等